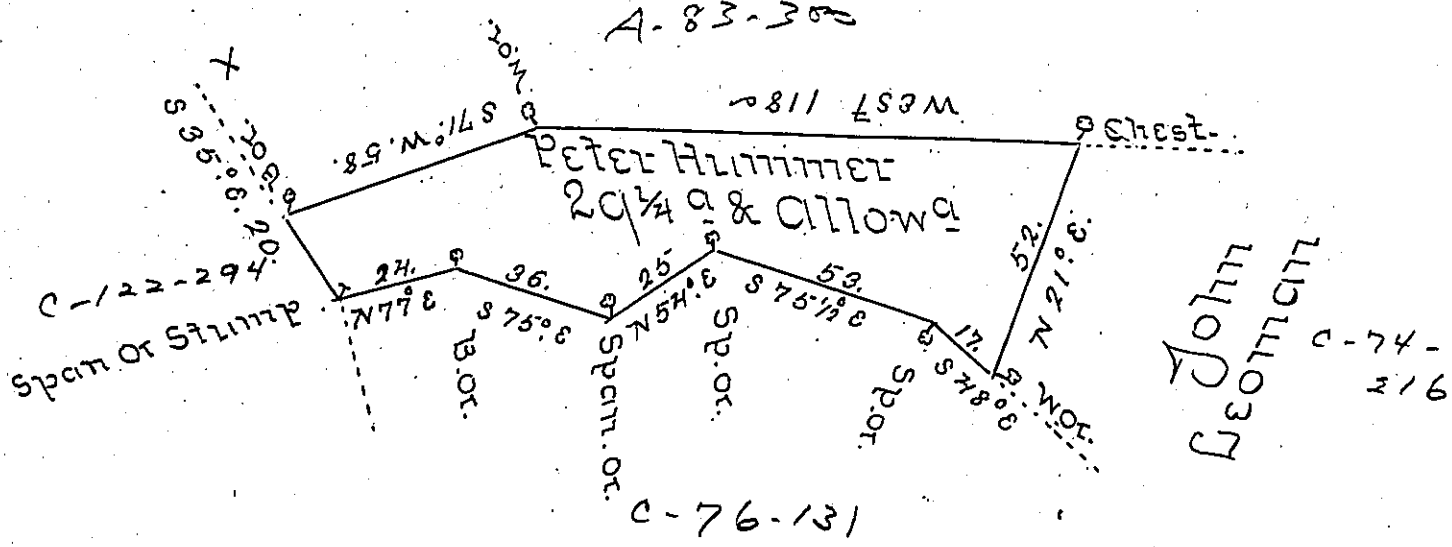


Stephen Belt

Marion Marion



Peter Hammer's other Land

Surveyd to Peter Hammer on the 17th day of Dec-
 ember 1765 the above described tract of Twenty
 Nine Acres & a Quarter & the Usual Allowance
 of six PC^t Situate in Rapho Town P. Lancaster
 County By Warrant of the 18th day of October 1764
 Returned in order to agree with the Proprietaries

P-Bartem Galbraith U.S.

Mo Geo Bulkins Esq^r }
 Survey Gen^l - }

IN TESTIMONY that the above is a copy of the original remaining on file in
 the Department of Internal Affairs of Pennsylvania, made
 conformably to an Act of Assembly approved the 16th day of
 February, 1833, I have hereunto set my Hand and caused
 the Seal of said Department to be affixed at Harrisburg,
 this nineteenth day of May 1905.

Geo R. Pearson
 Secretary of Internal Affairs.